



Noise Monitoring Result

Day Time (0700 - 1900hrs on normal weekdays)

Location: M1a - Harbour Road Sports Centre

Date	Time	Weather	Measurement Noise Level			Baseline Level	Construction Noise Level	Limit Level
			Leq	L10	L90	Leq	Leq	Leq
Unit: dB(A), (30-min)								
29/11/11	10:04	Fine	73.9	76.6	69.9	69.2	72	75
06/12/11	10:02	Cloudy	75.1	77.7	70.8	69.2	74	75
16/12/11	10:56	Fine	74.5	77.7	69.5	69.2	73	75
20/12/11	16:11	Cloudy	73.5	76.7	68.6	69.2	71	75

Location: M2b - Noon-day gun area

Date	Time	Weather	Measurement Noise Level			Baseline Level	Construction Noise Level	Limit Level
			Leq	L10	L90	Leq	Leq	Leq
Unit: dB(A), (30-min)								
29/11/11	10:51	Fine	69.9	70.9	67.9	-	70	75
06/12/11	10:45	Cloudy	70.4	71.6	69.0	-	70	75
16/12/11	10:45	Fine	73.2	75.0	68.5	-	73	75
20/12/11	8:25	Cloudy	74.8	77.6	70.2	-	75	75

Location: M3a - Tung Lo Wan Fire Station

Date	Time	Weather	Measurement Noise Level			Baseline Level	Construction Noise Level	Limit Level
			Leq	L10	L90	Leq	Leq	Leq
Unit: dB(A), (30-min)								
29/11/11	13:00	Fine	68.4	70.3	66.2	-	68	75
06/12/11	11:25	Cloudy	67.7	69.7	65.1	-	68	75
16/12/11	13:38	Fine	67.3	69.3	64.6	-	67	75
20/12/11	9:15	Cloudy	70.1	73.1	67.7	-	70	75

Location: M4b - Victoria Centre

Date	Time	Weather	Measurement Noise Level			Baseline Noise Level	Construction Noise Level	Limit Level
			Leq	L10	L90	Leq	Leq	Leq
Unit: dB(A), (30min)								
29/11/11	13:43	Fine	69.4	71.1	66.8	-	69	75
06/12/11	13:00	Cloudy	70.5	72.4	67.8	-	71	75
16/12/11	14:26	Fine	70.9	72.6	68.5	-	71	75
20/12/11	9:57	Cloudy	71.7	73.1	69.7	-	72	75

Location: M5b - City Garden

Date	Time	Weather	Measurement Noise Level			Baseline Level	Construction Noise Level	Limit Level
			Leq	L10	L90	Leq	Leq	Leq
Unit: dB(A), (30min)								
29/11/11	15:14	Fine	74.0	77.2	69.8	-	74	75
06/12/11	14:08	Cloudy	72.7	74.4	69.9	-	73	75
16/12/11	11:30	Fine	68.2	70.0	64.5	-	68	75
20/12/11	13:02	Cloudy	70.9	73.1	65.4	-	71	75

Location: M6 - HK baptist Church henrietta Secondary School

Date	Time	Weather	Measurement Noise Level			Baseline Level	Construction Noise Level	Limit Level
			Leq	L10	L90	Leq	Leq	Leq
Unit: dB(A), (30-min)								
29/11/11	14:31	Fine	72.7	73.9	70.9	70.7	68	70
06/12/11	14:50	Cloudy	72.6	74.1	70.7	70.7	68	70
16/12/11	15:50	Fine	73.0	74.7	69.7	70.7	69	70
20/12/11	11:15	Cloudy	73.6	75.0	71.6	70.7	70	70

Bolded values representing the noise Limit Level exceedance(s).



Noise Monitoring Result

Day Time (0700 - 1900hrs on normal weekdays)

Location: M7e - International Finance Centre (Eastern End of Podium)

Date	Time	Weather	Measurement Noise Level			Baseline Level	Construction Noise Level	Limit Level
			Leq	L10	L90	Leq	Leq	Leq
Unit: dB(A), (30-min)								
29/11/11	08:31	Fine	69.2	70.6	67.3	-	69	75
06/12/11	08:37	Cloudy	68.9	70.0	67.5	-	69	75
16/12/11	08:30	Fine	75.3	76.4	73.5	-	75	75
20/12/11	14:38	Cloudy	76.2	77.6	74.6	-	76	75

Location: M7w - International Finance Centre (Western End of Podium)

Date	Time	Weather	Measurement Noise Level			Baseline Level	Construction Noise Level	Limit Level
			Leq	L10	L90	Leq	Leq	Leq
Unit: dB(A), (30-min)								
29/11/11	09:06	Fine	65.7	66.7	63.4	-	66	75
06/12/11	16:22	Cloudy	64.5	65.7	62.7	-	65	75
16/12/11	10:03	Fine	68.4	70.3	66.3	-	68	75
20/12/11	14:00	Cloudy	68.7	70.3	67.0	-	69	75

Bolded values representing the noise Limit Level exceedance(s).



Noise Monitoring Result

Restricted Time (1900 - 2300 hrs on normal weekdays and 0700-2300 on holiday)

Location: M4b - Victoria Centre

Date	Time	Weather	Measurement Noise Level			Average Noise Level	Baseline Noise Level	Construction Noise Level	Limit Level
			Leq	L10	L90	Leq	Leq	Leq	Leq
Unit: dB(A), (5-min)									
01/12/11	19:01	Cloudy	66.8	68.0	65.2	66.3	-	66	70
	19:06		66.1	66.7	65.0				
	19:12		66.0	66.8	65.1				
08/12/11	19:56	Fine	66.5	68.3	64.2	66.8	-	67	70
	20:01		67.0	68.9	64.7				
	20:07		66.8	68.3	64.9				
15/12/11	19:48	Fine	65.9	67.5	64.0	66.0	-	66	70
	19:53		66.1	67.7	64.2				
	19:59		66.0	67.5	64.4				
21/12/11	21:00	Fine	65.5	66.9	63.3	64.5	-	65	70
	21:05		64.1	65.6	61.8				
	21:11		63.8	65.2	61.6				

Location: M5b - City Garden

Date	Time	Weather	Measurement Noise Level			Average Noise Level	Baseline Level	Construction Noise Level	Limit Level
			Leq	L10	L90	Leq	Leq	Leq	Leq
Unit: dB(A), (5-min)									
01/12/11	20:13	Cloudy	65.4	67.1	63.5	65.7	-	66	70
	20:18		65.3	66.7	63.4				
	20:24		66.2	68.2	63.3				
08/12/11	20:24	Fine	66.5	68.6	63.4	66.8	-	67	70
	20:29		66.8	68.9	63.8				
	20:35		67.2	69.3	63.3				
15/12/11	20:02	Fine	67.6	67.8	65.3	67.8	-	68	70
	20:07		68.6	69.3	65.3				
	20:12		67.1	68.6	65.0				
21/12/11	19:52	Fine	66.3	68.1	64.4	66.2	-	66	70
	20:00		66.4	68.4	64.0				
	20:07		65.8	67.5	63.4				

Location: M1a - Harbour Road Sports Center

Date	Time	Weather	Measurement Noise Level			Average Noise Level	Baseline Level	Construction Noise Level	Limit Level
			Leq	L10	L90	Leq	Leq	Leq	Leq
Unit: dB(A), (5-min)									
29/11/11	20:10	Fine	75.0	78.0	69.9	74.8	61.1	75	70
	20:15		75.3	78.8	70.1				
	20:20		74.0	76.9	68.5				
06/12/11	20:15	Fine	74.0	76.6	67.8	73.4	61.1	73	70
	20:20		72.8	76.1	67.3				
	20:25		73.4	76.6	67.6				
15/12/11	21:01	Fine	70.0	73.7	62.8	69.1	61.1	68	70
	21:06		67.4	70.6	62.0				
	21:12		69.6	72.7	63.0				
20/12/11	21:00	Cloudy	70.4	74.6	65.8	70.3	61.1	70	70
	21:05		70.0	73.0	65.1				
	21:10		70.5	73.7	63.8				

Location: M2b - Noon-day gun area

Date	Time	Weather	Measurement Noise Level			Average Noise Level	Baseline Level	Construction Noise Level	Limit Level
			Leq	L10	L90	Leq	Leq	Leq	Leq
Unit: dB(A), (5-min)									
29/11/11	20:54	Fine	69.7	72.5	65.9	69.0	-	69	70
	20:59		68.8	70.5	66.6				
	21:04		68.3	69.8	66.4				
06/12/11	21:00	Fine	67.2	68.8	64.8	67.2	-	67	70
	21:05		67.2	68.7	64.8				
	21:10		67.1	68.9	64.9				
15/12/11	19:21	Fine	66.8	68.6	64.8	67.1	-	67	70
	19:26		67.4	69.5	64.8				
	19:31		67.1	68.7	65.0				
20/12/11	21:29	Cloudy	69.3	71.6	65.5	68.1	-	68	70
	21:34		67.8	69.8	65.3				
	21:39		67.0	68.9	63.8				

Location: M3a - Tung Lo Wan Fire Station

Date	Time	Weather	Measurement Noise Level			Average Noise Level	Baseline Level	Construction Noise Level	Limit Level
			Leq	L10	L90	Leq	Leq	Leq	Leq
Unit: dB(A), (5-min)									
01/12/11	19:32	Cloudy	66.8	68.4	64.3	67.0	-	67	70
	19:37		67.0	69.2	64.1				
	19:43		67.1	68.6	65.5				
08/12/11	19:25	Fine	65.9	68.2	63.3	65.9	-	66	70
	19:30		65.4	67.9	62.3				
	19:36		66.3	68.3	63.7				
15/12/11	19:13	Fine	64.5	67.0	61.2	65.2	-	65	70
	19:18		65.7	68.0	61.5				
	19:24		65.2	67.7	61.3				
21/12/11	20:23	Fine	68.1	70.5	64.9	67.4	-	67	70
	20:28		67.0	68.8	64.2				
	20:35		67.1	68.9	64.9				

Bolded values representing the noise Limit Level exceedance(s).



Noise Monitoring Result

Restricted Time (1900 - 2300 hrs on normal weekdays and 0700-2300 on holiday)

Location: M7e - International Finance Centre (Eastern End of Podium)

Date	Time	Weather	Measurement Noise Level			Average Noise Level	Baseline Level	Construction Noise Level	Limit Level
			Leq	L10	L90	Leq	Leq	Leq	Leq
Unit: dB(A), (5-min)									
29/11/11	07:25	Fine	67.6	68.9	65.8	68.3	-	68	70
	07:30		68.9	71.3	66.0				
	07:35		68.4	70.2	66.0				
06/12/11	19:37	Fine	67.7	69.1	65.7	67.7	-	68	70
	19:42		68.0	70.1	65.8				
	19:47		67.3	68.8	65.8				
16/12/11	07:18	Fine	68.9	72.1	66.7	69.6	-	70	70
	07:23		67.7	69.0	66.1				
	07:28		71.4	74.8	69.2				
20/12/11	19:46	Cloudy	70.1	71.6	69.8	70.3	-	70	70
	19:51		70.3	71.5	70.0				
	19:56		70.5	71.3	69.7				

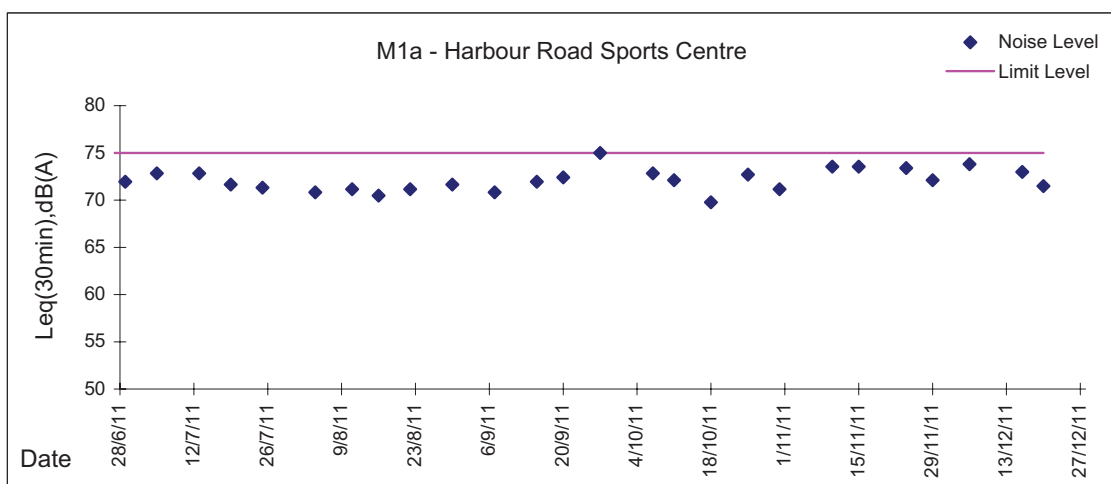
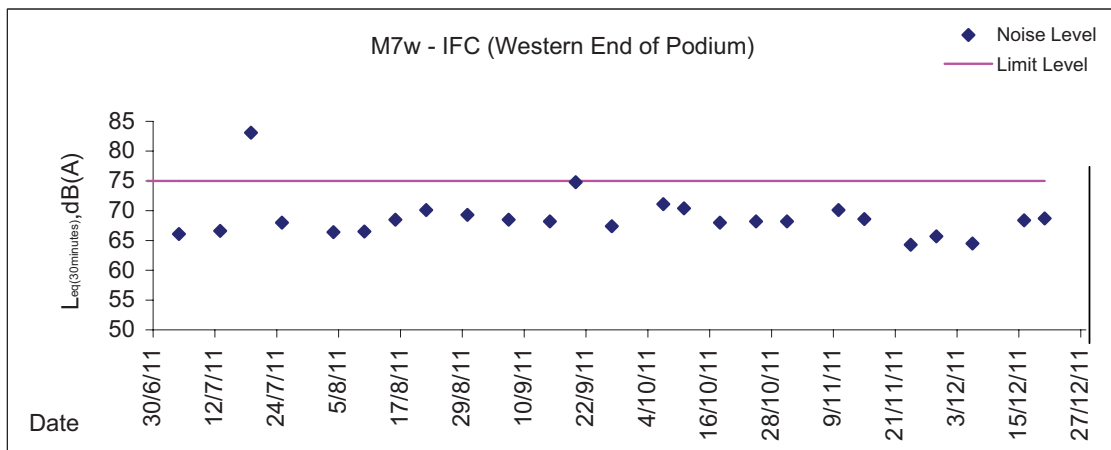
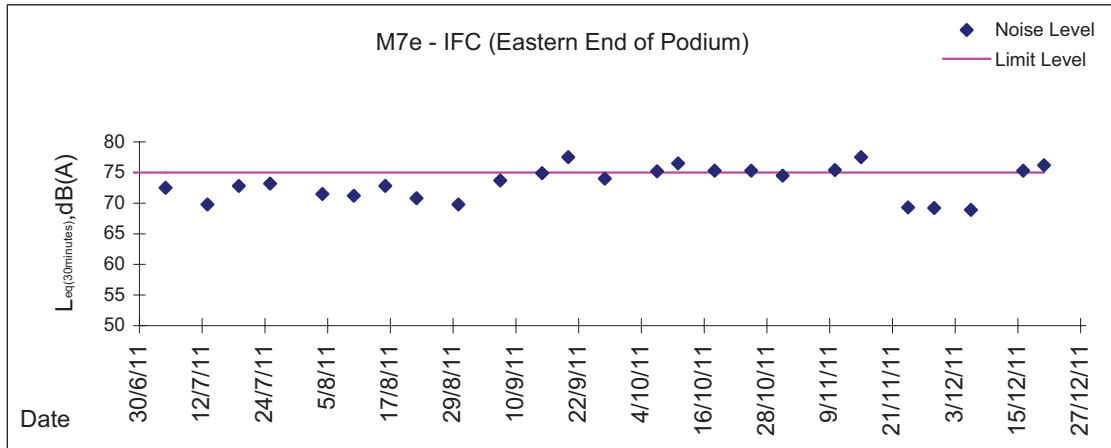
Location: M7w - International Finance Centre (Western End of Podium)

Date	Time	Weather	Measurement Noise Level			Average Noise Level	Baseline Level	Construction Noise Level	Limit Level
			Leq	L10	L90	Leq	Leq	Leq	Leq
Unit: dB(A), (5-min)									
29/11/11	07:09	Fine	62.1	65.1	60.8	62.9	-	63	70
	07:14		63.1	65.4	59.9				
	07:19		63.3	66.1	60.6				
06/12/11	19:06	Fine	63.7	64.5	62.2	63.5	-	64	70
	19:11		63.2	64.0	62.7				
	19:16		63.6	64.7	62.5				
16/12/11	19:00	Fine	69.9	72.4	66.6	68.7	-	69	70
	19:05		68.2	69.3	66.4				
	19:11		67.7	69.0	66.1				
20/12/11	19:17	Cloudy	68.4	69.0	66.4	68.1	-	68	70
	19:22		67.9	69.2	66.3				
	19:27		68.0	69.9	65.9				

Bolded values representing the noise Limit Level exceedance(s).

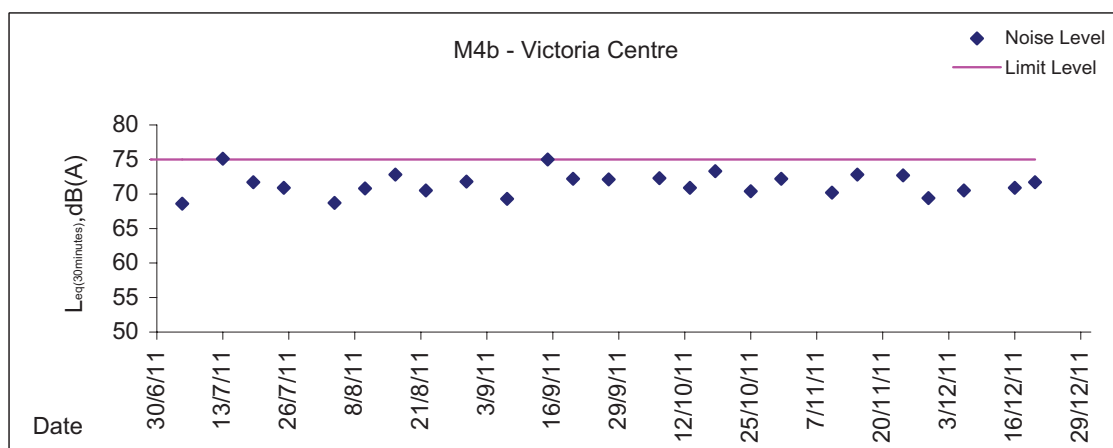
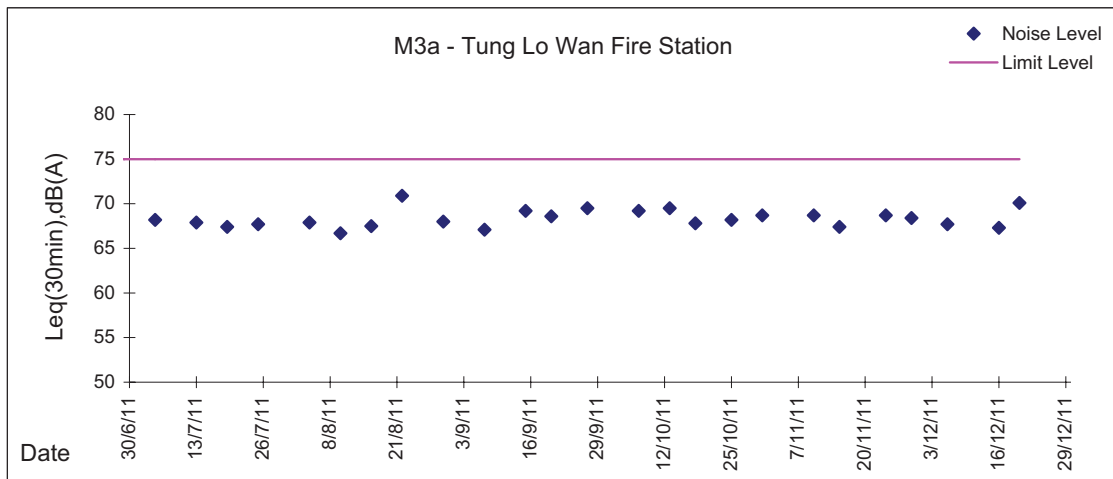
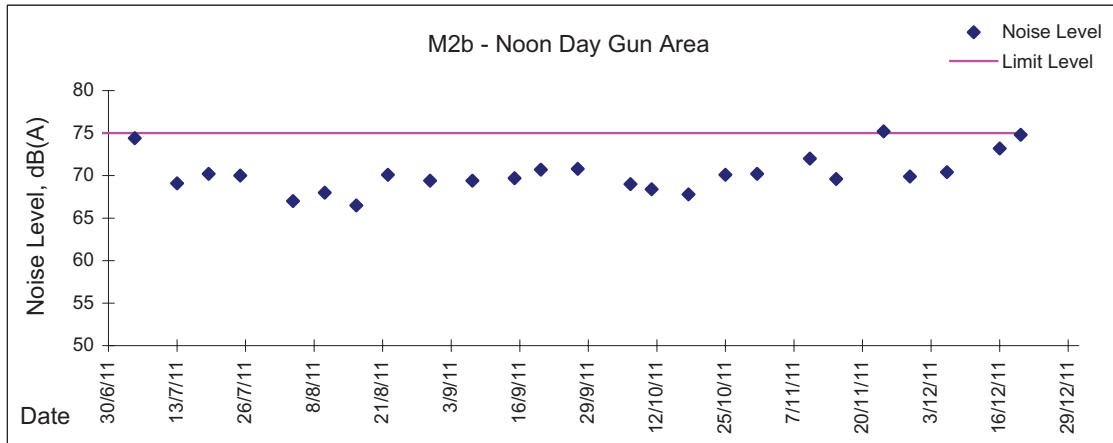
Graphic Presentation of Noise Monitoring Result

Day Time (0700 - 1900hrs on normal weekdays)



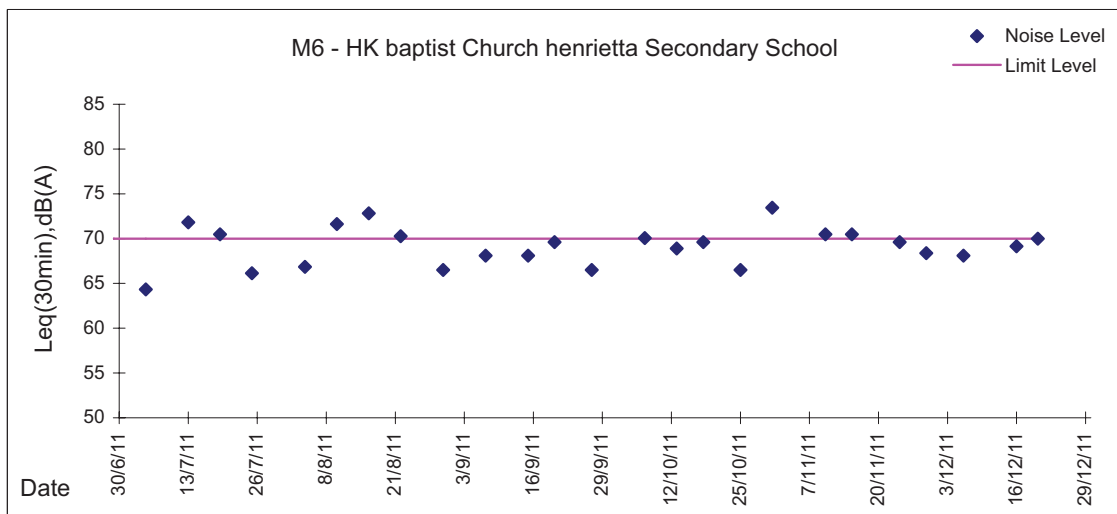
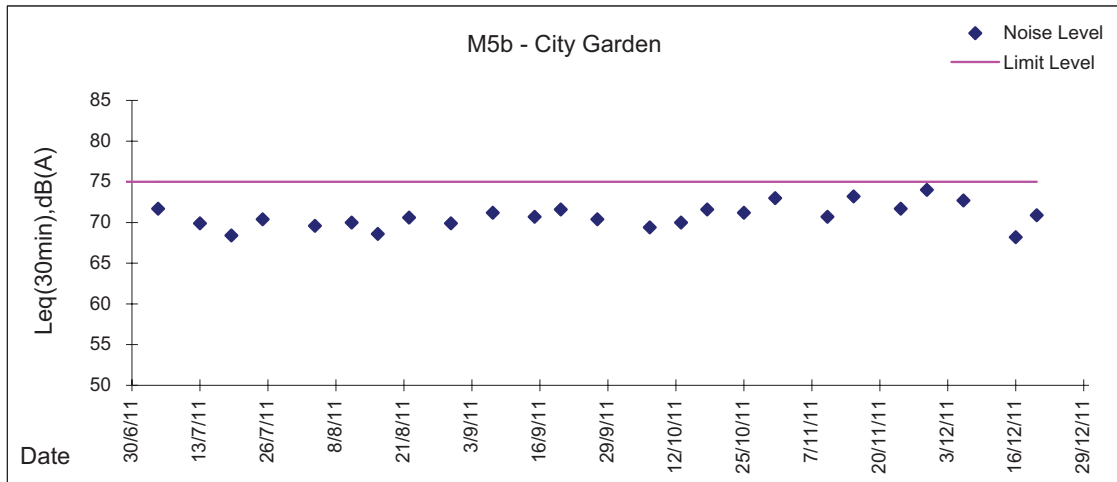
Graphic Presentation of Noise Monitoring Result

Day Time (0700 - 1900hrs on normal weekdays)





Graphic Presentation of Noise Monitoring Result
Day Time (0700 - 1900hrs on normal weekdays)





Graphic Presentation of Noise Monitoring Result

Restricted Time (1900 - 2300 hrs on normal weekdays and 0700-2300 on holiday)

